

- No strapless-must have original straps
- Slit may not be above 6 inches from mid knee



- Too tight
- Slit may not be above 6 inches from mid knee
- Too low cut, even if it has see through lace



- Too short, must remain 6 inches from mid knee at all times



- Too low cut
- No side cut outs

**Inappropriate Styles**

-Too tight  
-No side cuts  
even if  
covered with  
lace



-Too short,  
lace does not  
make a short  
skirt long.  
Length must  
remain 6  
inches from  
mid knee



-Too tight and  
form fitting

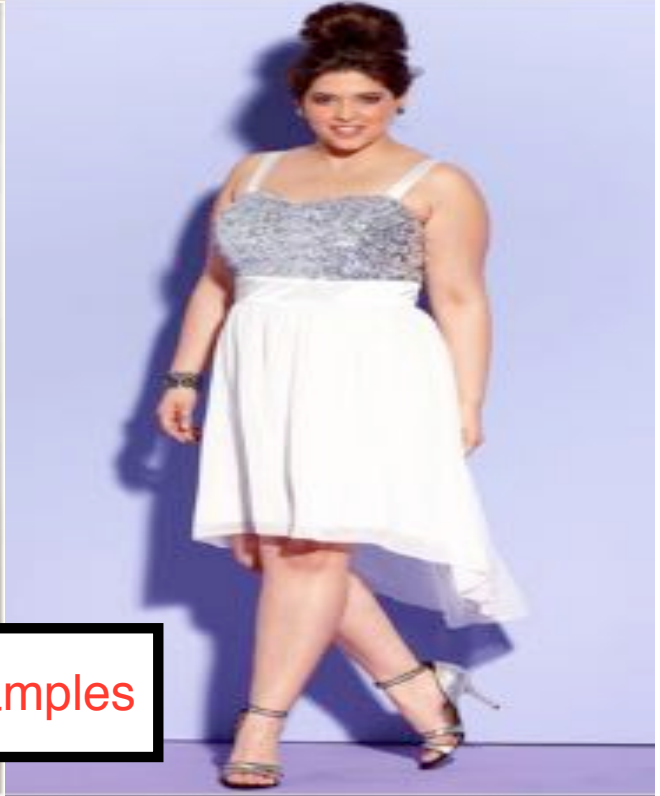


-No strapless-dress  
must have original  
straps  
--Be careful with  
sweetheart necklines,  
most of the time they  
are too revealing



-Too low in back  
-Must be 3 inches  
above natural  
waistline

**Inappropriate  
Styles**



Appropriate Dress Examples